



INTERNATIONAL ETHELLES CLASS 14th Annual Coral Reef Cup

March 19– 21, 2021

Coral Reef Yacht Club
2484 South Bayshore Drive
Coconut Grove, Florida,
33133

The organizing authority is Etchells Fleet 20.

SAILING INSTRUCTIONS (SIs)

1 RULES

- 1.1 The event is governed by the rules as defined in *The Racing Rules of Sailing* with the US prescriptions as noted in the Notice of Race.
- 1.2 The Coral Reef Yacht Club COVID Rules for Regattas as posted on the Official Notice Board (ONB) shall be in effect.

2. CHANGES TO SAILING INSTRUCTIONS

- 2.1 Any change to the sailing instructions will be posted before 0900 on the day it will take effect, except that any change to the schedule of races will be posted by 1800 on the day before it will take effect.
- 2.2 Changes to the sailing instructions may be made on the water by displaying code flag “L” and broadcast on VHF channel 71.

3 COMMUNICATIONS WITH COMPETITORS

- 3.1 Notices will be posted on the Official Notice Board (ONB) located at <https://yachtscoring.com/emenu.cfm?eID=14293>.
- 3.2 On the water, the race committee intends to monitor and communicate with competitors on VHF radio channel 71.
- 3.3 From the first warning signal until the end of the last race of the day, except in an emergency, a boat shall not make voice or data transmissions and shall not receive voice or data communication that is not available to all boats.

4 CODE OF CONDUCT

- 4.1 Competitors and support persons shall comply with reasonable requests from race officials.

5 SIGNALS MADE ASHORE

- 5.1 Signals made ashore will be displayed from the main flagpole at the Coral Reef Yacht Club.
- 5.2 When flag “AP” is displayed ashore, ‘1 minute’ is replaced with ‘not less than 60 minutes’ in Race Signals AP.

6 SCHEDULE OF RACES

- 6.1 Friday, March 19, 2021
0900 Skipper’s meeting in Boathouse
1100 Warning signal first race

Additional races to follow

Saturday, March 20, 2021	1100	Warning signal first race Additional races to follow
Sunday, March 21, 2021	1100	Warning signal first race Additional races to follow No warning after 1430

7 CLASS FLAGS

7.1 The Class flag will be the Etchells Class insignia on a white flag.

8 RACING AREA

8.1 The racing area is 1 to 3 nm south of Dinner Key Channel Marker. SI Addendum 2 shows the location of the racing area.

9 COURSES

9.1 The diagrams in SI Addendum 1 shows the courses.

9.2 **COURSE #3** – Start, Windward (1+1a), Leeward (2s/2p), Windward (finish).

COURSE #4 – Start, Windward (1+1a), Leeward (2s/2p), Windward (1+1a), Leeward (finish).

COURSE #5 – Start, Windward (1+1a), Leeward (2s/2p), Windward, (1+1a), Leeward (2s/2p), Windward (finish).

9.3 No later than the warning signal, the race committee signal vessel will display the appropriate course number, approximate compass bearing and distance of the first leg and will also inform the fleet via VHF radio channel 71.

10 MARKS

10.1 Marks will be orange inflatable cylinders, the offset will be an orange inflatable cylinder.

10.2 Marks for the start and/or finish shall be a yellow inflatable mark or a staff displaying an orange flag on a port or starboard end race committee mark vessel.

10.3 The following marks are rounding marks: 1, 1a, 2s/2p.

10.4 If only a single windward or leeward mark is present, boats shall leave that mark to port before proceeding to the next mark.

11 THE START

11.1 The starting line is between staffs displaying orange flags on the signal vessel at the starboard end and the port-end pin vessel or the yellow inflatable mark. The race committee vessel may be fitted with a “stand-off” buoy, which will be considered part of the vessel.

11.2 If any part of a boat’s hull is on the course side of the starting line at her starting signal and she is identified, the race committee will attempt to hail her sail number. Failure to hail her number, failure to hear such a hail, or the order in which boats are hailed will not be grounds for a request for redress. This changes RRS 62.1(a).

11.3 A boat that does not start within five (5) minutes after her starting signal will be scored Did Not Start without a hearing. This changes RRS A5.2.

12 CHANGE OF THE NEXT LEG OF THE COURSE

12.1 To change the next leg of the course, the race committee will move the original mark(s) or the finishing line to a new position although it may not yet be in position before the leading boat begins that leg of the course. Any marks to be rounded after rounding the changed mark may be relocated to maintain the original course configuration.

13 THE FINISH

- 13.1 The finishing line will be between a staff displaying an orange flag on a race committee vessel on the starboard end and a nearby yellow inflatable mark or staff displaying an orange flag on the race committee mark vessel at the port end. This changes Race Signals – Blue flag. The race committee vessel may be fitted with a “stand-off” buoy, which will be considered part of the vessel.
- 13.2 Code flag “A” will be displayed at the finish to indicate no more racing today.

14 PENALTY SYSTEM

- 14.1 If a boat takes a penalty for breaking a rule of Part 2 her penalty will be a One-Turn Penalty. If she breaks a rule of Part 2 within the Zone, the penalty will be a Two-Turn Penalty. (This changes RRS 44.1).
- 14.2 Alternatively, a boat may take a Scoring Penalty in compliance with RRS 44.3(c) for breaking a rule of Part 2 prior to a jury hearing by acknowledging in writing breaking a rule. If approved by the jury, the penalty shall be 20% of the number of boats entered (rounding 0.5 upward), but shall not be less than 5 places nor worse than DNF. RRS 44.3(a) and (b) will not apply.

15 TIME LIMITS

- 15.1 If no boat has passed the windward mark offset within 45 minutes or finishes within two hours of the start the race will be abandoned.
- 15.2 Boats failing to finish within 30 minutes after the first boat sails the course and finishes will be scored Time Limit Expired (TLE). A TLE score for all boats still competing when the time limit expires shall be one more point than the number of boats that have finished within the time limit. This changes RRS 35, A5.1, A5.2 and A10.

16 HEARING REQUESTS

- 16.1 The protest time limit is 60 minutes after the race committee signal vessel docks. The docking time will be posted on the Official Notice Board at Yachtscoring.com. Protests shall be filed within the appropriate time limit. This changes RRS 61.3.
- 16.2 Hearing request forms are available from Yachtscoring.com by logging into the General Race Forms for Competitors and filling out the online form. If this is non-functioning, then by filling out a protest form (a fillable form is available under General Race Forms, For Competitors on Yachtscoring.com and emailing it, or a picture (or pictures) of the form to: protest@coralreefyachtclub.org.
- 16.3 Notices will be posted on the ONB at Yachtscoring.com no later than 15 minutes after the protest time limit to inform competitors of hearings in which they are parties or named as witnesses. Hearings will be held on the 2nd floor SE end of the Boathouse and parties and their witnesses should report there at the scheduled time.
- 16.4 The protest time limit shall be 60 minutes after the docking time of the race committee finish vessel for protest or request for redress by the race committee or jury about incidents they observe in the racing area. This changes RRS 61.3 (as above) and 62.2.
- 16.5 RRS 52.2 is changed to delete “or two hours after the incident, whichever is later and RRS 66 is changed to shorten the time for requesting redress from 24 hours to two (2) hours. On the last scheduled day of racing, a redress request shall be submitted no later than 30 minutes after the relevant information or decision is posted.
- 16.6 Within the protest time limit, the race committee shall post the bow numbers or sail numbers of all of the boats that are disqualified or penalized under RRS 29, RRS 30 and/or SI 19.1.

- 16.7 A notice fulfilling the requirements of RRS 63.2 will be posted not later than 30 minutes following the expiration of the protest time limit.

17 SCORING

- 17.1 The Low Point System RRS A4 will apply, except as changed in SI 15.2.
- 17.2 One (1) race is required to be completed to constitute a regatta. This changes NoR 11.1.
- 17.3 (a) When fewer than five (5) races have been completed, a boat's series score is the total of her race scores.
- (b) When five (5) or more races have been completed, a boat's series score is the total of her race scores excluding her worst score.
- 17.4 Scoring inquiries should be submitted from the regatta main page on Yachtscoring.com.

18 BOAT IDENTIFICATION

- 18.1 The race committee will assign bow numbers to each participating boat. The numbers will be available at registration. These numbers shall be affixed to both port and starboard sides in the following manner: The leading edge of the forward number will be 22 inches aft of the stem and 1 inch below the deck. The leading edge of the aft number will be 3 inches aft of the aft edge of the forward number and 1 inch below the deck. All bow numbers shall be on a contrasting background.

19 SAFETY REGULATIONS

- 19.1 Prior to the warning signal of their first race each day, each boat shall sail past the stern of the race committee signal vessel on starboard tack and hail her bow or sail number until acknowledged by the race committee.
- 19.2 RRS A5.1 will be changed to provide that a boat failing to check in prior to the warning signal of their first race of each day will be scored (DNS) in that race without a hearing.
- 19.3 A boat that retires from a race shall notify the race committee, the jury or the receptionist at the Coral Reef Yacht Club as soon as possible.

20 SUPPORT TEAMS/VESSELS

- 20.1 Support Persons, coach vessels, and private spectator vessels are expected to render assistance to a boat in danger when requested by the boat, or at the request of the race committee or jury. All such vessels shall monitor VHF channel 71 during the race.
- 20.2 A yacht shall receive no outside assistance from support or coach boats while racing. Towing to and from the race course area is permitted.
- 20.3 Team leaders, coaches and other Support Persons shall stay 100 meters outside areas where boats are racing from the time of the Warning Signal until all boats have finished or retired or the race committee signals a postponement, general recall or abandonment.
- 20.4 All support vessels shall be equipped with a functioning engine safety cut-out switch (kill switch) which shall remain attached to the support person at all times while the engine is running. Failure to comply may be misconduct and/or result in expulsion from the event.
- 20.5 The Penalty for breaking SI 20.1, 20.3 or 20.4 will be at the discretion of the jury up to and including disqualification of all boats associated with the team or other Support Person.

21 TRASH DISPOSAL

- 21.1 Trash may be placed aboard official or support person vessels.

22 HAUL OUT RESTRICTION

- 22.1 Boats shall be afloat prior to the warning signal for the first race of the regatta and shall not be hauled during the regatta except with written permission and complete compliance with the instructions of the principal race officer or the chief judge of the event.

23 PRIZES

- 23.1 Prizes will be awarded to first through fifth place skippers and crew in an awards ceremony at the Reef Top Bar of the Boathouse. All competitors are welcome to attend the prizegiving in the Boathouse provided they wear a mask while on club property and maintain social distance.
- 23.2 The Coral Reef Cup Perpetual Trophy which remains in CRYC custody shall be awarded to the first place boat.

24 DISCLAIMER OF LIABILITY

- 24.1 Competitors participate in the regatta entirely at their own risk. See RRS 3, Decision to Race. The organizing authority, the race committee, the IECA, and the sponsors will not accept any liability for material damage or personal injury or death sustained in conjunction with or prior to, during, or after the regatta.

25 INSURANCE

- 25.1 Boats sailing in this regatta must be adequately insured against third party liability for racing risks (minimum \$300,000 coverage).

ADDENDUM 1

COURSE DIAGRAMS

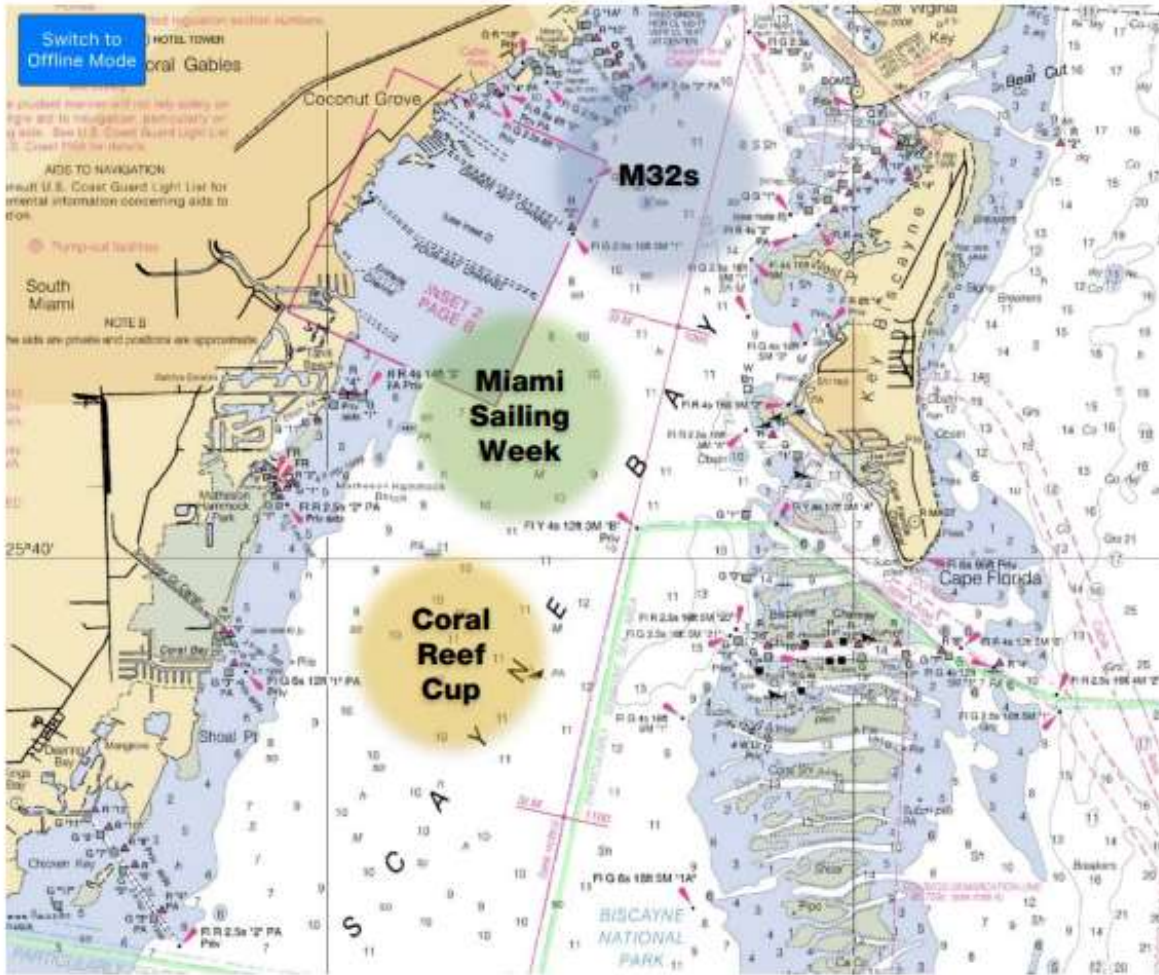
COURSE W

Course	Description	
	Windward/Leeward offset mark 1a with Downwind finish	
	Possible courses	
	Signal	Mark Rounding Order
	W4	Start-1-1a-2s/2p-1-1a-Finish

COURSE DIAGRAMS

Course	Description	
	Windward/Leeward offset mark 1a with Windward finish	
	Possible courses	
	Signal	Mark Rounding Order
	W3	Start-1-1a-2s/2p-Finish
	W5	Start-1-1a-2s/2p-1-1a-2s/2p-Finish

ADDENDUM 2 RACING AREA



Circle	VHF	Diameter (nm)	Coordinates
M32s	73	2.0	
Miami Sailing Week	74	1.5	N25 41.000 W080 13.250
Coral Reef Cup	71	1.5	N25 39.345 W080 14.000